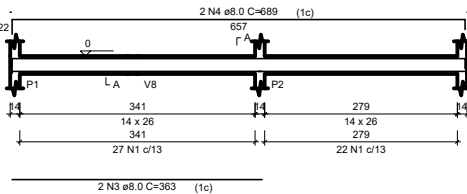
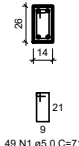


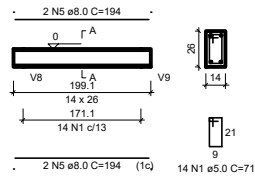
V1  
ESC 1:50



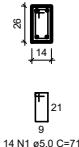
SEÇÃO A-A  
ESC 1:25



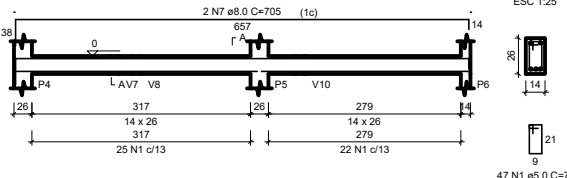
V2  
ESC 1:50



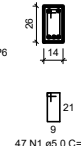
SEÇÃO A-A  
ESC 1:25



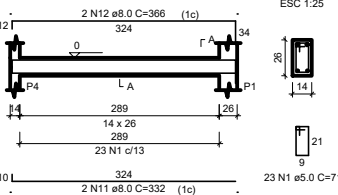
V3  
ESC 1:50



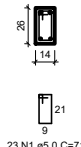
SEÇÃO A-A  
ESC 1:25



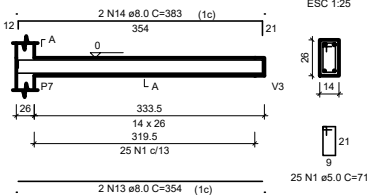
V6  
ESC 1:50



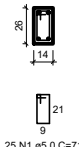
SEÇÃO A-A  
ESC 1:25



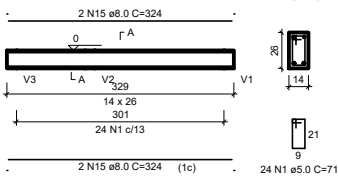
V7  
ESC 1:50



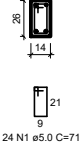
SEÇÃO A-A  
ESC 1:25



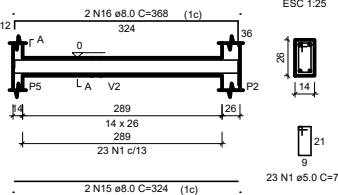
V8  
ESC 1:50



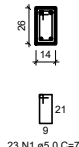
SEÇÃO A-A  
ESC 1:25



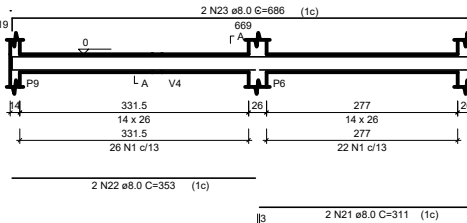
V9  
ESC 1:50



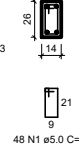
SEÇÃO A-A  
ESC 1:25



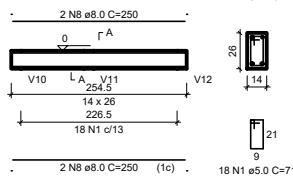
V12  
ESC 1:50



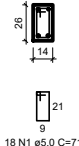
SEÇÃO A-A  
ESC 1:25



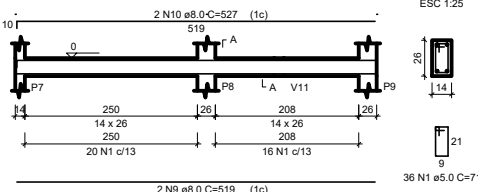
V4  
ESC 1:50



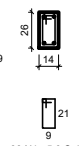
SEÇÃO A-A  
ESC 1:25



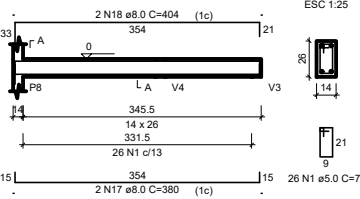
V5  
ESC 1:50



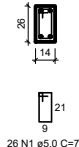
SEÇÃO A-A  
ESC 1:25



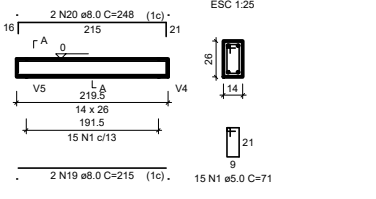
V10  
ESC 1:50



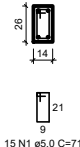
SEÇÃO A-A  
ESC 1:25



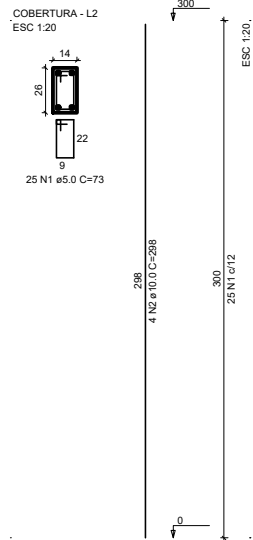
V11  
ESC 1:50



SEÇÃO A-A  
ESC 1:25



P1=P2=P3=P4=P5=P6=P7=P8=P9



RELAÇÃO DO AÇO

PILARES SUPERIORES

AÇO	N	DIAM (mm)	QUANT	C.UNIT (cm)	C.TOTAL (cm)
CA60	1	5.0	225	73	16425
CA50	2	10.0	36	298	10728

RESUMO DO AÇO

AÇO	DIAM (mm)	C.TOTAL (m)	QUANT + 10% (Barras)	PESO + 10% (kg)
CA50	10.0	107.3	10	72.8
CA60	5.0	164.3	15	28.6
PESO TOTAL (kg)				
CA50				72.8
CA60				28.6

Volume de concreto (C-25) = 0.98 m³  
Área de forma = 21.60 m²

RELAÇÃO DO AÇO

VIGAS BALDRAMES

AÇO	N	DIAM (mm)	QUANT	C.UNIT (cm)	C.TOTAL (cm)
CA60	1	5.0	348	71	24708
CA50	2	8.0	4	301	1204
	3	8.0	3	363	1089
	4	8.0	2	689	1378
	5	8.0	4	194	776
	6	8.0	3	351	1053
	7	8.0	2	705	1410
	8	8.0	4	250	1000
	9	8.0	2	519	1038
	10	8.0	2	527	1054
	11	8.0	2	332	664
	12	8.0	2	366	732
	13	8.0	2	354	708
	14	8.0	2	353	706
	15	8.0	6	324	1944
	16	8.0	2	368	736
	17	8.0	3	380	1140
	18	8.0	2	404	808
	19	8.0	2	215	430
	20	8.0	2	248	496
	21	8.0	2	311	622
	22	8.0	3	353	1059
	23	8.0	2	686	1372

RESUMO DO AÇO

AÇO	DIAM (mm)	C.TOTAL (m)	QUANT + 10% (Barras)	PESO + 10% (kg)
CA50	8.0	214.8	20	93.2
CA60	5.0	247.1	23	41.9

PESO TOTAL (kg)  
CA50 93.2  
CA60 41.9

Volume de concreto (C-25) = 1.78 m³  
Área de forma = 32.35 m²

PROJETO ESTRUTURAL

RT: Eng.ª CRISTIANE JOSIELY VIEIRA BARBOSA  
CREA/MG: 213651/D

PROP: PREFEITURA MUNICIPAL DE MANGA  
CNPJ: 18.270.447/0001-46  
ESCALAS: INDICADAS

ÁREAS: ÁREA CONSTRUÍDA: 44,75m²  
LOCAL: VESTIÁRIO - VEST. 1  
CAMPO ALVOREDO  
MANGA - MG

DETALHE: VIGAS BALDRAMES;  
RESUMO E RELAÇÃO DO AÇO;  
PILARES SUPERIORES.  
DATA: 27 DE AGOSTO DE 2021

FOLHA: 02-03